

issue highlights:

▶ NEVER HEARD OF THE ASHFUNDATION? TIME TO READ UP.....1

▶ A NOT-SO-NEW FACE IN TOWN: OUR ADVISING OFFICE TRANSITION.....2

▶ DISABILITY IN THE MEDIA.....2

April | 2013

Tamar Mentzer

UW NSSLHA newsletter

A legacy of giving and receiving: UW's relationship with the ASHFoundation and what we can do to strengthen it

“Wait, isn’t this the same thing as ASHA?” I thought when I first heard about the ASHFoundation. Frankly, although they share the prefixing acronym of ‘American Speech-Language-Hearing,’ I was pretty far off the mark. While ASHA is a powerful professional association for credentialing, accreditation, and pre-professional support, the ASHFoundation is a charitable nonprofit organization whose main goal is to provide grants and scholarships both to professionals and to students. They also collaborate on projects that help to advance treatments and technologies in the field.

What does the ASHFoundation do for UW SPHSC? The Foundation has a long history of supporting our department. In the recent past, over half a dozen research grants and awards have been given to faculty members, including Drs. Baylor, Peter, Spencer, Eadie, Wallstrom, and Werner, and to even more of our graduate students.

What can the Foundation do to support students? There are numerous grants and scholarships available to students. Many are at the graduate level, but undergraduates may be unaware of other opportunities,

including a \$5,000 scholarship for NSSLHA members who have paid the national dues. If you are interested in getting more information about this and other available scholarships, email us at NSSLHA00@uw.edu. You can also visit the Foundation’s website at www.ashfoundation.org.

Sounds great! What are we doing to help? The Foundation is funded by donations. Because it offers such invaluable support to universities, it is common practice for these universities to aid in fundraising efforts. The more we give back to the Foundation, the better position they will be in to offer continued support to our students, faculty, and clinicians. Although UW NSSLHA has been a long-time donor, the last several years have seen us fall off the map while dozens of other NSSLHA chapters nationwide have successfully maintained this important relationship.

Our local chapter of NSSLHA is re-establishing this relationship as a priority. You can help by participating in our fundraising efforts (like our recent Valentine’s Day bake sale) to support the ASHFoundation. Keep updated on future events through our email list serve and Facebook page.



Student involvement:

Spotlight on HSDC

Who: Erin Ideishi, Senior

What: Volunteering as a Speech, Language, and Literacy Department Speech Client Liaison at Seattle’s Hearing, Speech, and Deafness Center (HSDC)

How: Erin heard about a classmate’s experience volunteering at the HSDC, and also got information in an advising meeting.

What has this experience taught you? “This position has given me the experience of

working in a clinical setting and learning the ‘know how’ of processing paperwork, making charts, etc., that an SLP has to do and know. I really like the relationships you develop with the staff and SLPs. They are always willing to help you.

“At first, it was very intimidating, as I needed to learn things very quickly while on the job. But after a while, things calmed down and I caught on to the department’s fast-paced

environment.”

How can I do the same thing? “Listen and inquire about what your classmates in the department are doing, and then seek out the volunteer jobs. Talking to your friends, classmates, and professors is very beneficial! Once that is done, call the volunteer director of the site you are interested in. By doing this, I feel like it shows you have initiative and passion for the position.”

Staff spotlight: Rebekah Diana and Gabrielle Gruber

As Eagleson transitions between undergraduate advisers, we offer a 'thank you' and a 'welcome back' to two staff members who make our lives oh-so-much easier.

Nobody appreciates the daily stresses of SPHSC undergraduates quite like the advising gurus of Eagleson Hall. We are grateful for the wonderful job that interim adviser Rebekah Diana has done in guiding and supporting us during Gabrielle Gruber's maternity leave.

"It was a pleasure working with SPHSC faculty, staff, and students," Diana reflects. "I appreciate making great professional relationships in the department as well as supporting undergraduates achieve their academic goals. I will continue a career in education."



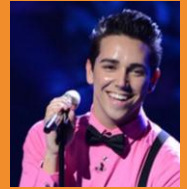
Gruber states, "I am truly excited to be back in Eagleson Hall. I missed the interactions with my students but of course, my wonderful maternity leave was an amazing time with little Luke. It has been rewarding to see him go through some of the developmental milestones that I know my students learn about in their SPHSC courses. Rebekah was a joy to work with and I rested easy knowing my students were in capable hands. I have no doubt she has an amazing future ahead of her in education."

From all of us: thank you!

SO, YOU'RE TIRED OF THE SAME OLD TV SHOWS.

WHY NOT CHECK OUT HOW SOME CURRENT SHOWS ADDRESS COMMUNICATION IMPAIRMENTS?

Lazaro Arbos, who tells the story of obstacles he's had to overcome due to his stuttering, has made it to the live rounds on 'American Idol.' *W/Th @8pm on Fox.*



'Breaking Bad' features R.J. Mitte, an actor with cerebral palsy, as the son of drug-dealing protagonist/antagonist Walter White. *Returns from hiatus July 14, on AMC.*

'Switched at Birth' has been commended for the way it has exposed the hearing world to Deaf culture. This season we got to see the first ever all-ASL episode. *M @8pm on ABC Family.*



Although the 'Parenthood' actor portraying Max does not have Asperger's Syndrome himself, the character has been hailed as an accurate and compassionate portrayal of the disorder. *Season 4 ended in Jan. on NBC.*

NSSLHA EVENTS and INVOLVEMENT

- ❖ This month, the National Multiple Sclerosis Society is going to hold its Seattle **WALK M.S. EVENT** on our campus! Email us for more information, or go to <http://main.nationalmssociety.org/goto/UWNSSLHA> to join our team and participate in the walk on Sunday, April 14.
- ❖ Thank you for making our SPHSC **TUMBLER SALE** a great success. Sales thus far have helped us raise hundreds toward the purchase of a new audiometer for the UW Clinic. We have a limited number of tumblers left, so stop by the advising office to pick one up soon. \$15 each, or \$12 for NSSLHA members.

- ❖ NSSLHA is initiating an exciting new **STUDENT MENTORSHIP PROGRAM**, pairing up undergraduates with a grad student mentor in their field of interest. This will be an incredible resource for advice and support. If you didn't sign up at one of our meetings, email us with your year in school and general field of interest. NSSLHA members only (membership is \$10).
- ❖ Our NSSLHA chapter now has a permanent spot on the SPHSC **DEPARTMENTAL WEBSITE!** Check it out at http://depts.washington.edu/sphsc/current-students/current_nsslha.shtml.
- ❖ Have you missed our past social events? Come catch up with fellow students at our upcoming **HAPPY HOUR** at MOD Pizza (across the street from Eagleson), 3-7pm on the second Thursday of the quarter (April 11). Undergraduates, post-baccalaureates, and graduate students all welcome.
- ❖ Spring quarter NSSLHA **MEETINGS** will be held every other Wednesday at 1:30pm in EGL 211. The first meeting will be on Wednesday, April 10.
- ❖ Stay updated on all of the above events and more. Visit our **FACEBOOK PAGE** at <http://www.facebook.com/UniversityOfWashingtonNsshla>, and click "Like" to get updates and information.



To contact UW NSSLHA with general questions or comments, please email NSSLHA00@uw.edu. For questions or requests specific to our newsletter, email tmentzer@uw.edu.

